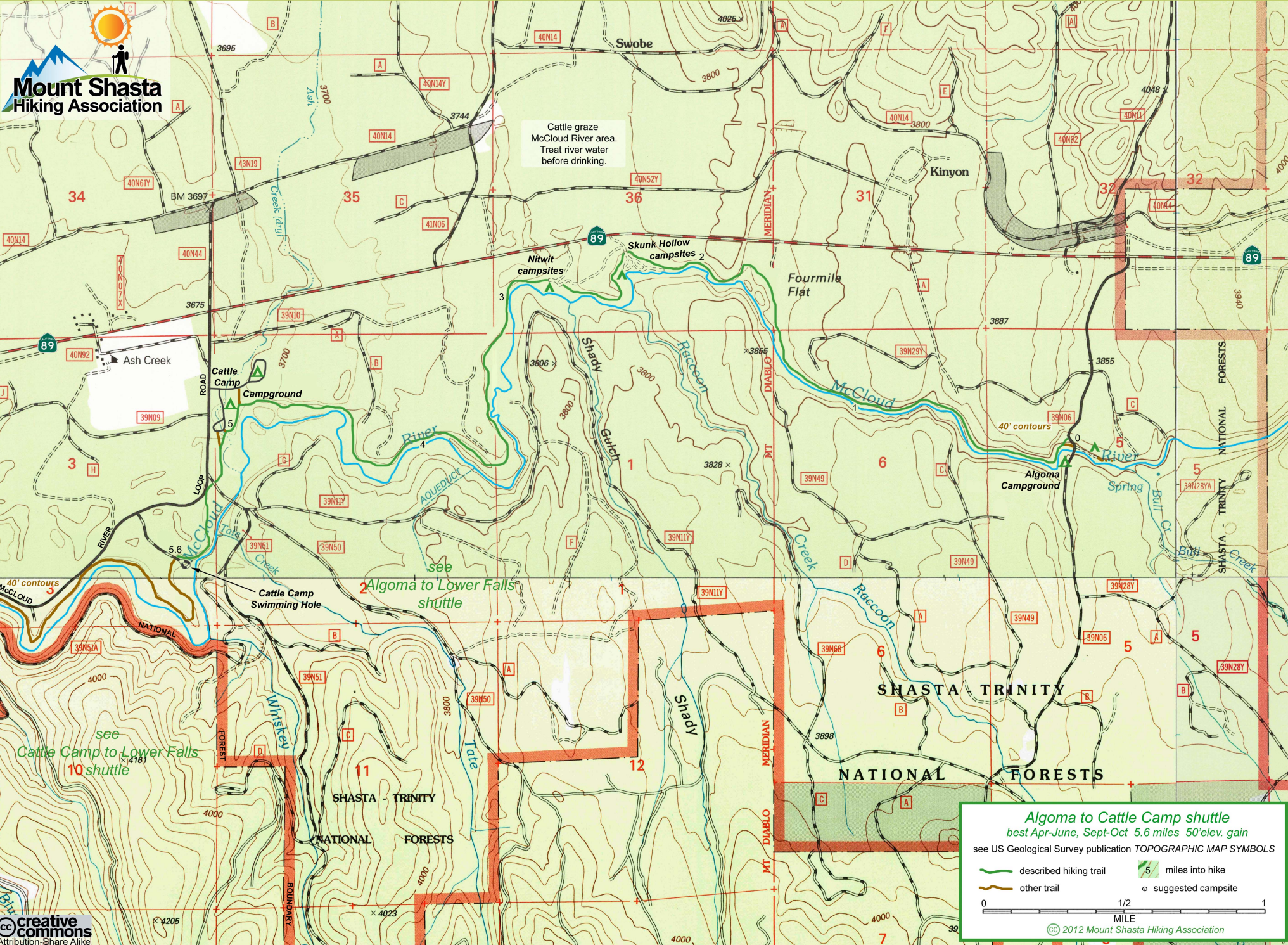


Cattle graze
McCloud River area.
Treat river water
before drinking.



Algoma to Cattle Camp shuttle
 best Apr-June, Sept-Oct 5.6 miles 50'elev. gain
 see US Geological Survey publication **TOPOGRAPHIC MAP SYMBOLS**

- described hiking trail
- other trail
- 5 miles into hike
- suggested campsite

0 1/2 1
 MILE

© 2012 Mount Shasta Hiking Association