

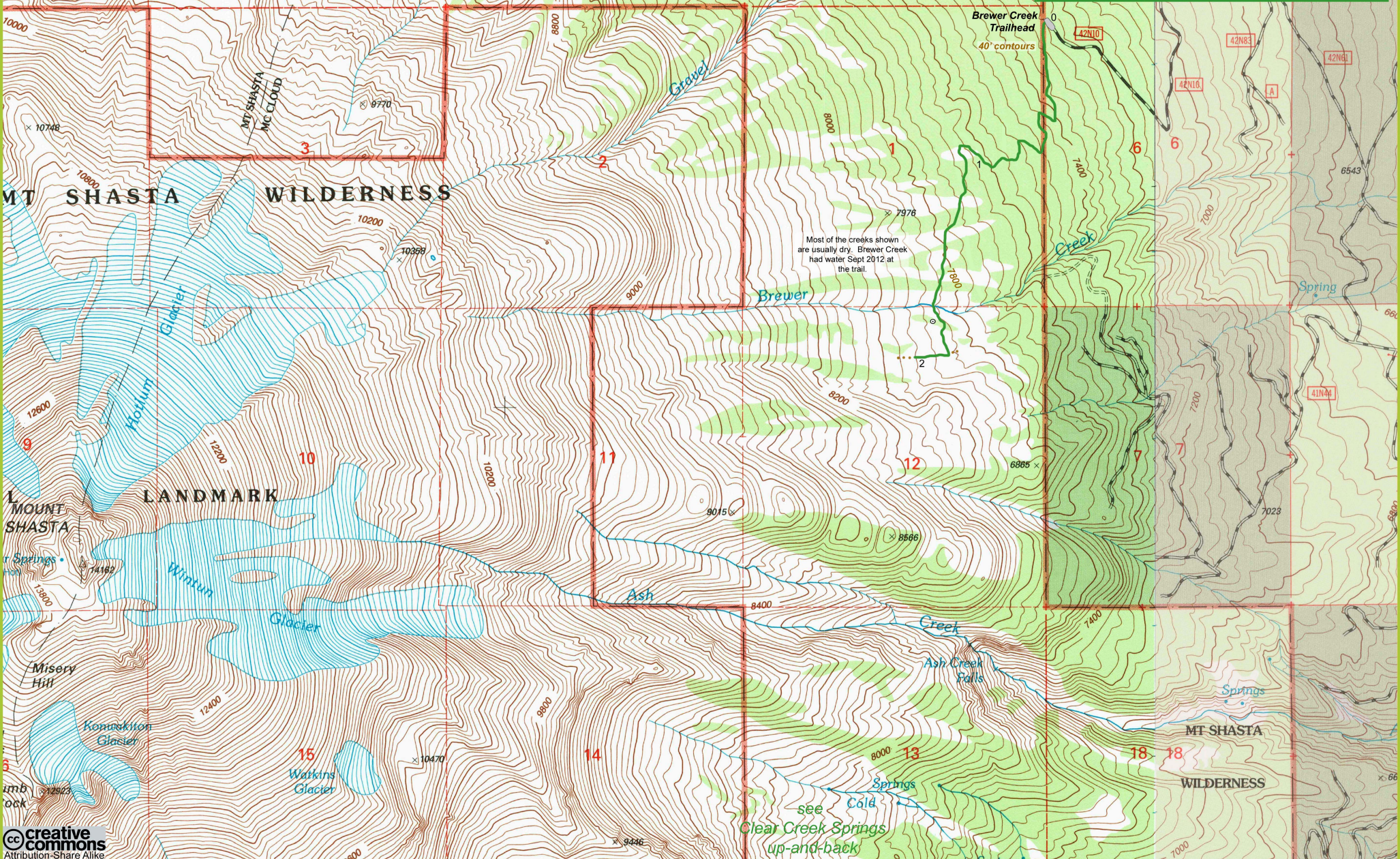
North Gate  
up-and-back

F O R E S T S

**Brewer Creek up-and-back**  
 best July-Oct 4.0 miles 650' elevation gain  
 see US Geological Survey publication TOPOGRAPHIC MAP SYMBOLS

- described hiking trail
- other trail
- 5 miles into hike
- suggested campsite

0 1/2 1  
MILE  
© 2012 Mount Shasta Hiking Association



Most of the creeks shown are usually dry. Brewer Creek had water Sept 2012 at the trail.

